



Gilt Edge Industries Ltd®

# TECHNICAL DATA SHEET

Customer Services  
CHC : 03 379 7067 or AKL: 09 443 7067  
Email: help@giltedge.co.nz

Technical & Sales Assistance  
Email: sales@giltedge.co.nz  
www.giltedge.co.nz

## Abzorba™ Acoustic Underlay

"We have used many acoustic underlays and Abzorba is the easiest to handle and lay. Our clients have been more than satisfied with the product's noisereduction qualities"

Steve Heald, Just Hardwood Floors

Impact noise is an invisible hazard and a growing problem in New Zealand buildings. The reduction of noise transfer between ceilings and floors is now a building requirement as per clause G6: Airborne and Impact Sound.

Abzorba™ acoustic underlay effectively reduces impact noise for all types of hard flooring. Made in NZ from 100% recycled rubber, Abzorba™ is produced as an easy-lay mat to provide IIC rated noise-absorption improvement (as measured by industry experts and backed by independent laboratory and field tests in a variety of floor-ceiling assemblies).

When laid in accordance with our installation guidelines, Abzorba™ provides users with a sound-deadening substrate for floor coverings by absorbing noise transfer through floors. It is designed to work with all hard floor surfaces and achieve the desired IIC noise reduction ratings.

Abzorba™ is ideal for hotels, apartments and commercial buildings when it is important to keep noise levels to a minimum. It can be used as an impact absorbing layer between all types of products, i.e under timber flooring, floor tiling, on stair treads, wooden sports floors, under timber framed joists and timber battens/joists.

It can be laid internally, above a concrete slab and beneath a wooden floor or ceramic tiles, or laid externally on suitable finishes along walkways.

In addition to its sound-absorbing qualities, Abzorba™ is also designed to be convenient to handle and use. Underlay mats are only 6mm thick and are produced in 1m x 0.5m sheets - making them easy to transport, cut and install (we can also custom-build to suit individual architectural requirements).

Manufactured to industry design specifications and produced in NZ from 100% recycled rubber; Abzorba™ is environmentally friendly – and a cost effective solution.

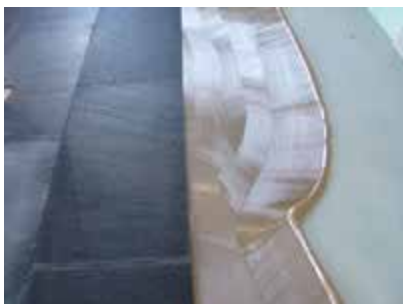
Abzorba™ provides an ideal acoustic impact noise solution that is easy on the ear, easy on the pocket and easy on the environment.

### Abzorba™ summary of benefits:

- Airborne and Impact sound absorbing
- Provides anti-fatigue properties
- Accommodates normal floor movement
- Easily cut/shaped, & quickly installed
- Tested to ISO 140-717
- Unaffected by water
- NZ made using 100% recycled rubber
- Minimised increase in floor level
- Requires no special fire rating preparation
- Conforms to NZ Building Code G6

### "You can hear the Abzorba™ difference"

Beware of Imitations: Abzorba™ acoustic underlay has been engineered and independently tested to provide a quality acoustic damping system. It is very important to ensure branded Abzorba™ acoustic underlay is specified and installed by qualified installers. Any deviation from the use of branded Abzorba™ acoustic underlay can significantly compromise performance.





## Abzorba™ Acoustic Underlay Specifications

|            |  |
|------------|--|
| Category:  | Sound-absorbing acoustic underlay sheets designed for easy handling and installation between floor base and floor surface.   |
| Material:  | Flexible rubber sheets made by bonding selected recycled rubber granules.  |
| Usage:     | Various indoor situations where acoustic damping is required. Ideally suited as an acoustic underlay for hard flooring (wood, ceramic tiles, concrete). End-use applications include apartments, hotels, cinemas, offices, and sports, arts, entertainment and performance centres. Contact Gilt Edge for external applications. |
| Thickness: | 6mm (precision cut, but some slight deviations can be expected).   |
| Size:      | 1000mm x 500mm (supplied as individual standard sheets - other sizes available).   |
| Weight:    | 6kg per square metre.  |

### Testing & Development

Abzorba™ has been independently tested to industry standards: ASTM E1007-97 & E989-89, and ISO 140-7:198 & 717-2:199. Field Impact Sound Insulation Data: Abzorba™ 6mm acoustic underlay, 200mm concrete slab, Bostik Ultraset Glue, 12mm Tasmanian Oak strip flooring.

**Results: IIC rating bare concrete = 37, IIC rating with Abzorba = 51**

**Abzorba™**  
Easy on the ear  
Easy on the pocket  
Easy on the environment

### Installation Guidelines

The following serves as a guide only. For complete installation instructions please contact Gilt Edge Industries.

**Sub-floor Types:** While Abzorba™ can be bonded to most common building substrates, the following procedures cover installation over timber, tile / slate underlay and concrete only.

**Sub-floor Preparation:** All surfaces must be sound, clean, smooth, level, dry, (and permanently dry) and free from any contaminants which may inhibit adhesion. If any remedial work is required, UZIN Levelling compounds should be used (see relevant data sheets as required). Concrete floors must be more than 4 weeks old prior to laying and be level to +/- 3mm over 3m. Do not lay at substrate surface temperatures below 10° and ensure any underfloor heating is off and not timed to operate during installation. Concrete sub-floors must be tested for moisture content using a suitable hygrometer and installation must not take place until all readings measure 75% RH or lower. For areas measuring above 75% an appropriate moisture barrier (eg. RL20 Hydrocoat) may be applied to allow installation to take place immediately.

**Sub-floor Application:** For external or wet area ceramic tile flooring, ensure fibre-reinforced waterproof membrane is laid on concrete base prior to laying Abzorba™. Abzorba™ can only be installed by approved installers using recommended glues and laying guidelines (refer to Gilt Edge Industries).

- Apply RL1017 single part polyurethane adhesive using a 1.6mm x 1.6mm V notched trowel.
  - Lay Abzorba™ into wet adhesive and immediately roll using a 45kg roller so as to provide full contact and transfer of the adhesive to the back of Abzorba™.
  - Abzorba™ must be in full contact with the adhesive while the adhesive cures. We recommend weighting down areas which do not lay flat until the adhesive cures. Pay particular attention to the joints of Abzorba™, ensuring they are firmly held in place.
  - Allow a 3.0mm expansion gap for every 3m of Abzorba™ and ensure same gap is also allowed at all abutting surfaces such as walls, fixtures, pipes, etc.
  - Lightly butt the Abzorba™ matting seams together in a brick bond pattern.
  - Abzorba™ can be easily cut using a utility knife and awkward shapes can be fitted using pattern paper.
  - Allow adhesive to cure for a minimum of 24 hours before commencing installation of top flooring material directly to Abzorba™.
- For use under Artificial Grass use Roberts 6037 by Gilt Edge Industries**

**Finished-floor Application:** Follow flooring manufacturer's installation instructions.

